

LLAMA AOP ONESIE

Fabric Weight- OK

Fabric feel - Too stiff. Needs to be softer. Please refer to the sample being sent for handfeel.

Print Feel - Print feels stiff, it needs to be softer.

Base colour- is a little too yellow, please make it a bit more blue.

Snap colour – snap colour is ok, but the rest of the garment needs to match this. See picture.

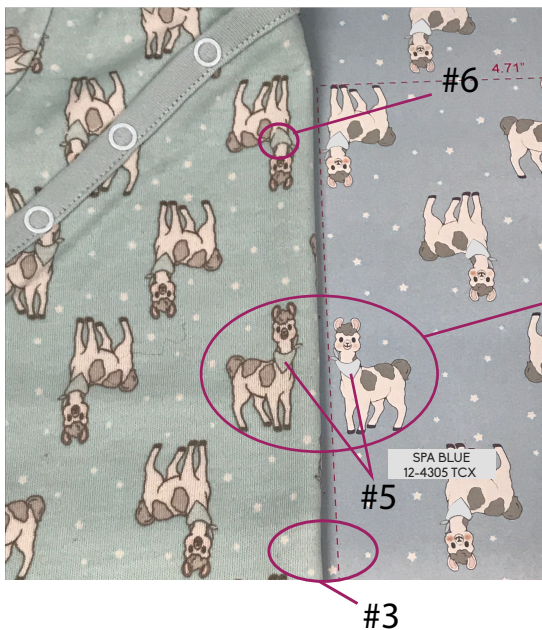
Binding colour - the binding and print ground colours need to match. Please see picture.



All colours must match the Pastel Blue 12-4607 TCX

All Over Print -

- 1) the Egret 11-0103 TCX colour is very DULL. Needs to be corrected.
- 2) The ground fabric is not CLEAN making the white part look dull. Please correct.
- 3) White stars in the print are not clear and visible. IMPROVE the look of white stars.
- 4) The print looks stretched along the grain. (Lengthwise) Please check the print again to make sure it is not stretched.
- 5) The scarf should have spa blue in it, but it looks the same as the ground colour.
- 6) Ensure all outlines are a continuous line without any gaps or spaces.



LLAMA EMBROIDERY/ APPLIQUE ONESIE

Fabric Weight- OK

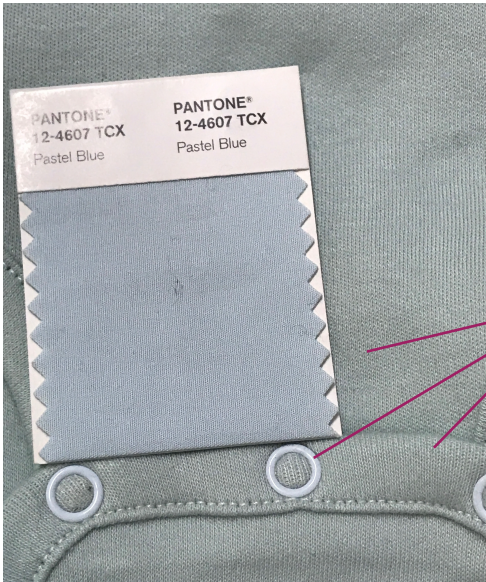
Fabric feel - Too stiff. Needs to be softer. Please refer to the sample being sent for handfeel.

Print Feel - Print feels stiff, it needs to be softer. Please refer to the sample being sent for handfeel.

Base colour- is dirty looking, please clean up and make a little more blue.

Snap colour – snap colour is ok, but the rest of the garment needs to match this.

Binding colour - the binding and ground colours need to match Pastel Blue 12-4607 TCX.



All colours must match the Pastel Blue 12-4607 TCX

Screen Print/ Applique Embroidery -

- 1) Change Dove 15-0000 TCX to Moonbeam 13-0000 TCX. See revised artwork in email.
- 2) Spa blue 12-4305 TCX print on the scarf applique is too yellow, and needs to be a little lighter. Please print the Egret 11-0103 TCX stripes on the scarf applique so there is more contrast and pattern is more visible.
- 3) Height is small by 1/4, it should be 3 3/4".
- 4) Monitor bleeding, ensure the lines are sharp and smooth.
- 5) Brushed nickel 18-5102 TCX dot underneath the mouth has been removed, see revised artwork in email.
- 6) Egret 11-0103 TCX colour is very DULL. Needs to be corrected.
- 7) Embroidery width is thick. Please make thinner is possible.

